

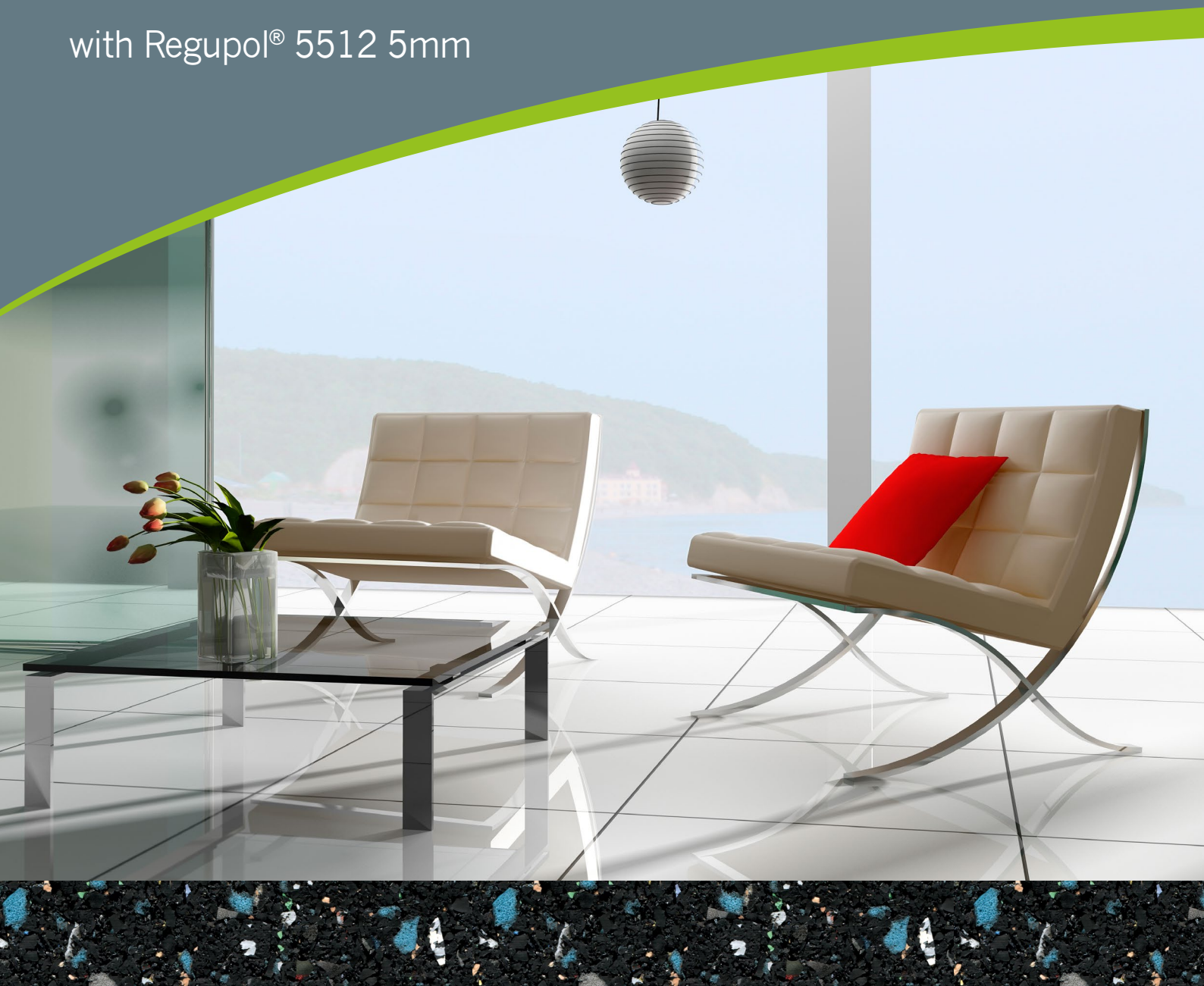
REGUPOL® ACOUSTIC UNDERLAY COLLECTION

ACOUSTIC SYSTEM FOR SCREED BEDS

with Regupol® 5512 5mm

Regupol®

Variofoam®



Regupol
Australia

Regupol® 5512 5mm

Regupol® 5512 5mm is a soundproofing acoustic underlay manufactured from recycled materials, bound with polyurethane. The product composition produces a cost effective solution to sound isolate bonded screed beds in wet and dry area installations. The product is also used under a number of hard flooring finishes such as bamboo, laminates and timber flooring.

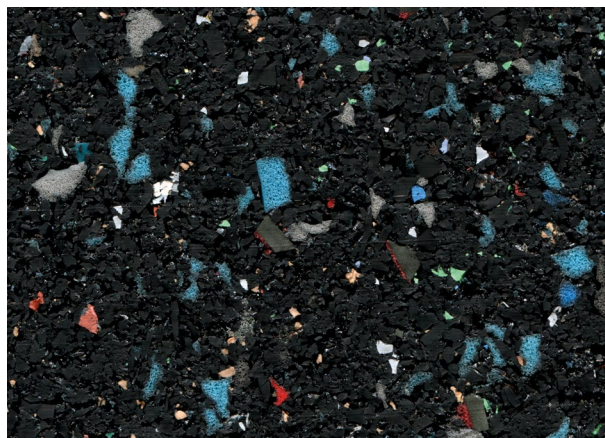
The **Regupol® 5512 5mm** can be found throughout many of Australia's multi-residential construction developments adding a good level of impact sound reduction under various flooring systems.

Benefits include:

- **Regupol® 5512 5mm** has been independently tested to show it meets the Deemed-to-Satisfy provisions of the current building regulations in accordance with the Building Code of Australia Part F5.4 Sound Insulation Rating of Floors (Impact)
- Offers long term performance without collapse or bottoming out
- Minimal creep, even under high loads
- Quick and easy to install
- Minimises construction heights
- High quality and exact material thickness
- Suitable for use with under floor heating
- Protects expansion joints
- PVC free
- Available in modular tiles for fast installation
- Made from recycled materials
- German quality guaranteed
- Manufactured and certified to OHAS 18001:2007, DIN ISO 9001:2008, DIN ISO 14001:2004 Management Systems



Typical Application Under Screed Bed and Tiled Floor



Regupol® 5512 5mm Impact Sound Acoustic Underlay

Product Data

Roll Length	20lm, 50lm
Roll Width	1.25m
Modular Tiles	1050mm x 500mm
Thickness	5mm

Acoustic Performance

Regupol® 5512 5mm is a soundproofing acoustic underlay designed to isolate approved floor finishes from the main structure of the building, reducing impact energy generated by general footfall.

NOTICE: Test data is based on periodical laboratory testing of test specimen taken from the actual manufacturing process and show the average values measured. The publishing of these technical data does not relieve the user of the necessity to test the relevant product for physical fitness based on a specific application.

Dry Area Bonded Screed Bed

with Regupol® 5512 5mm

This system reflects a typical residential application with an approved Screed Bed. For all other applications please contact Regupol's Technical Division. Please note that the drawings are not to scale and are for illustration purposes only.

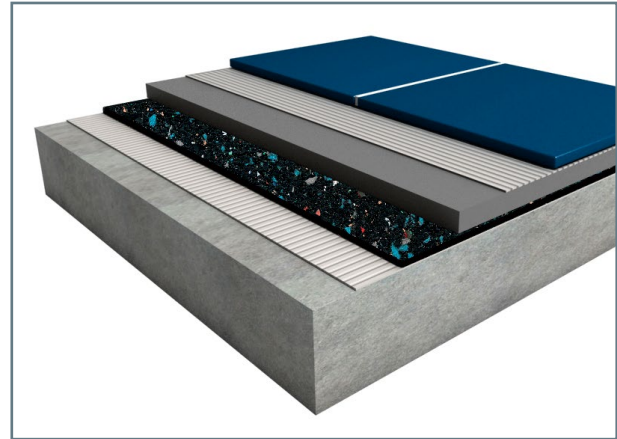
Adhesive and Sealer Information



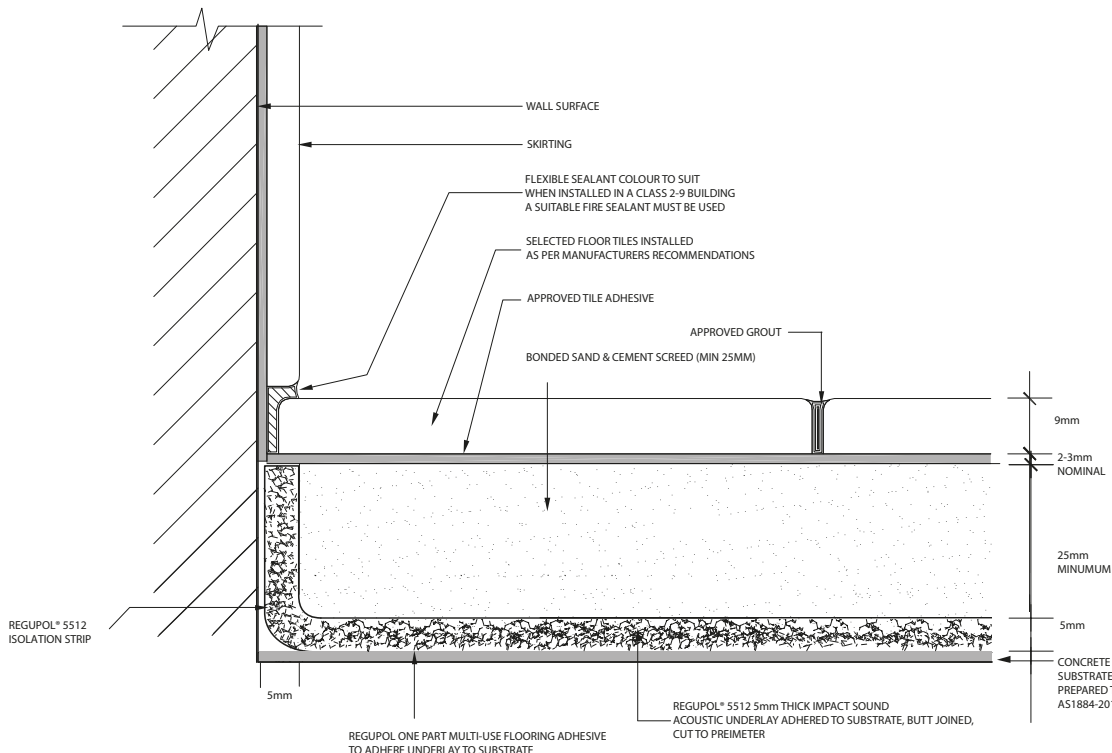
Regupol One Part Multi-Use Adhesive is a water based synthetic polymer, VOC compliant, multi-use flooring adhesive, with water resistant properties. This adhesive was specifically formulated to bond selected Regupol® products to most common interior sub-floors. The product is suitable for dry area installations only.



Regupol Primer 444 is a one part, solvent free, water based synthetic polymer resin formulated to be used on concrete substrates. Regupol Primer 444 is suitable for dry area installations only.



- 1 Approved Tile Grout
- 2 Selected Tile Floor Covering
- 3 Approved Tile Adhesive
- 4 Bonded Sand & Cement Screed (min 25mm)
- 5 Regupol® 5512 5mm Acoustic Underlay
- 6 Regupol One Part Multi-Use Flooring Adhesive
- 7 Concrete Substrate Prepared to AS1884-2012 with Regupol Primer 444



DISCLAIMER: The above information is given in good faith as a suggested guide in specifying Regupol® Impact Sound Acoustic Underlays, no guarantee or warranty is expressed or implied. Any circumstances not covered by this guide should be referred to Regupol (Australia) Pty Limited or its Distributors for any particular attention required. There are, however, many factors that may affect the outcome of projects using our products that are beyond our control. Regupol (Australia) Pty Limited cannot be responsible for poor climate conditions, inadequate surface preparation, poor application techniques, not observing curing times, improper thinning of adhesives or any variable beyond our control. No liability is accepted by Regupol (Australia) Pty Limited, our employees, distributors, representatives or agents, for any loss or damage, direct or indirect, that may result from using the information and/or suggestions as actual conditions for use that are beyond our control. All materials should be checked/tested for their suitability to the prevailing site conditions.

Wet Area Screed Bed

with Regupol® 5512 5mm

This system reflects a typical residential application with approved Screed Bed. For all other applications please contact Regupol's Technical Division. Please note that the drawings are not to scale and are for illustration purposes only.

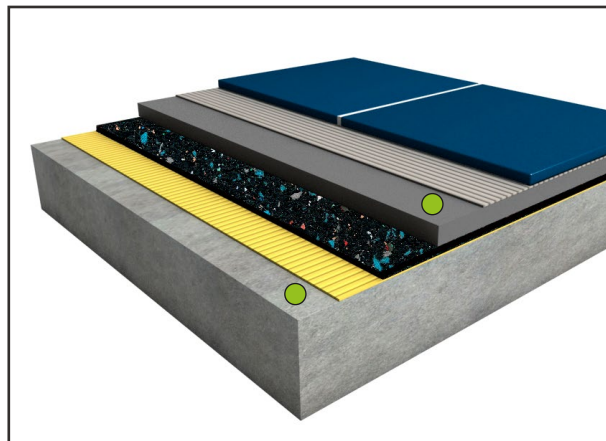
Adhesive and Sealer Information



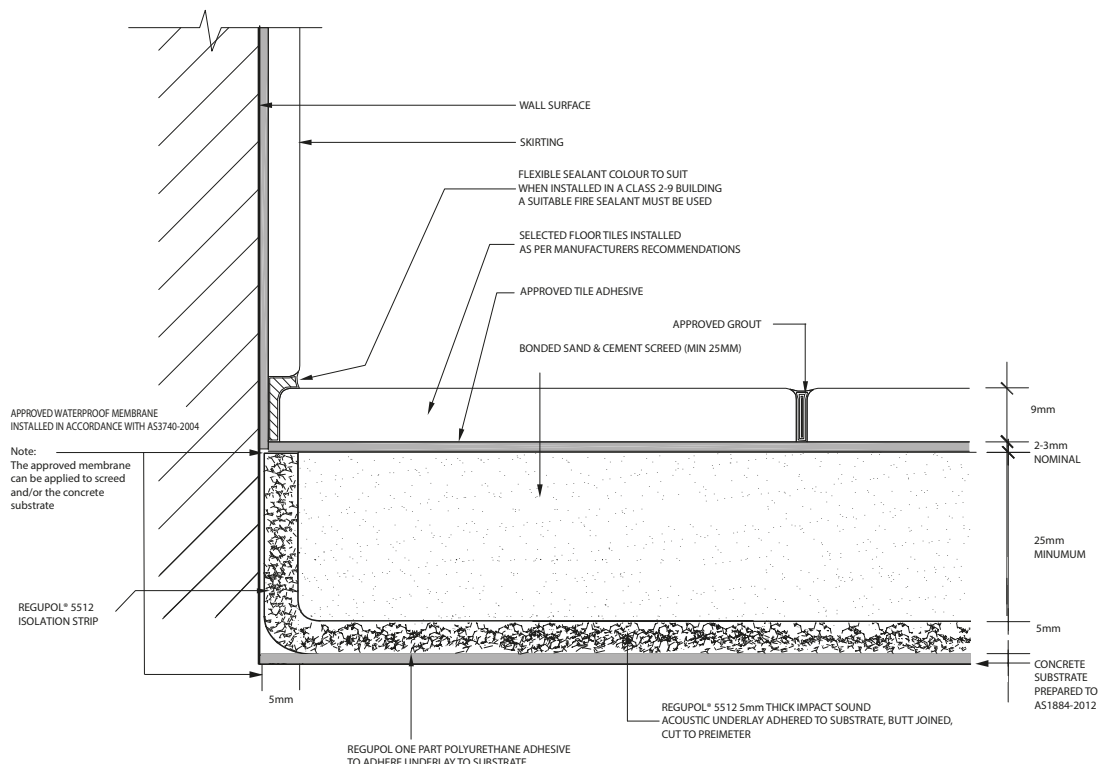
Regupol One Part Polyurethane Adhesive is an elastomeric moisture cured, solvent free polyurethane adhesive. The adhesive is suitable for internal and external wet and dry areas.



Regupol Two Part Water Based Epoxy Moisture Sealer is a high performance; water based two component epoxy moisture and vapour barrier formulated to prevent water seepage and permeation in building and construction substrates. Use when concrete substrate relative humidity exceeds 85%.



- 1 Approved Tile Grout
 - 2 Selected Tile Floor Covering
 - 3 Approved Tile Adhesive
 - 4 Bonded Sand & Cement Screed (min 25mm)
 - 5 Regupol® 5512 5mm Acoustic Underlay
 - 6 Regupol One Part Polyurethane Adhesive
 - 7 Concrete Substrate Prepared to AS1884-2012 Use Regupol Two Part Water Based Epoxy Moisture Sealer if relative humidity exceeds 85%.
- Approved Waterproof Membrane installed in accordance with AS3740-2004 and can be applied to Screed Bed and/or concrete substrate.



DISCLAIMER: The above information is given in good faith as a suggested guide in specifying Regupol® Impact Sound Acoustic Underlays, no guarantee or warranty is expressed or implied. Any circumstances not covered by this guide should be referred to Regupol (Australia) Pty Limited or its Distributors for any particular attention required. There are, however, many factors that may affect the outcome of projects using our products that are beyond our control. Regupol (Australia) Pty Limited cannot be responsible for poor climate conditions, inadequate surface preparation, poor application techniques, not observing curing times, improper thinning of adhesives or any variable beyond our control. No liability is accepted by Regupol (Australia) Pty Limited, our employees, distributors, representatives or agents, for any loss or damage, direct or indirect, that may result from using the information and/or suggestions as actual conditions for use that are beyond our control. All materials should be checked/tested for their suitability to the prevailing site conditions.